

**NÁVOD K OBSLUZE**  
**OPERATION INSTRUCTIONS**



# NEX - APP

První spuštění a spárování aplikace NEX APP

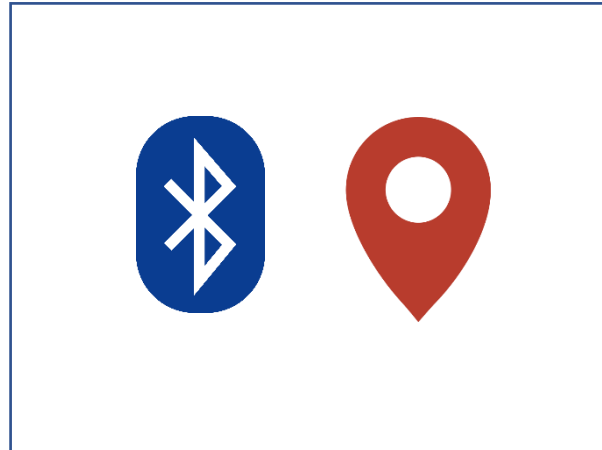


\*Tato příručka je poskytována na platformě IOS. U systému Android mohou existovat drobné rozdíly

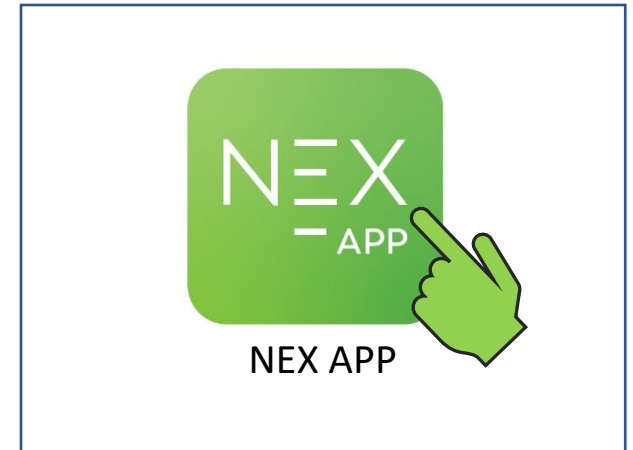
Krok 1. Najděte a nainstalujte aplikaci NEX APP v příslušném obchodě na vaší platformě (Google Play nebo App Store).



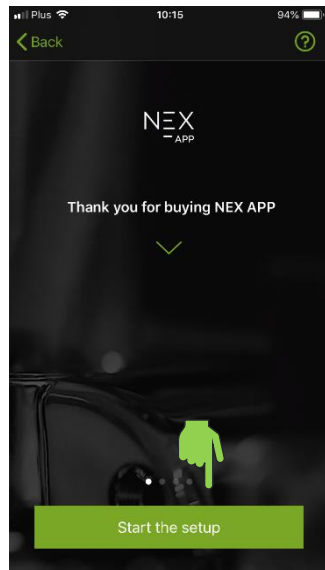
Krok 2. Ujistěte se, že jsou povoleny funkce lokalizace a bluetooth



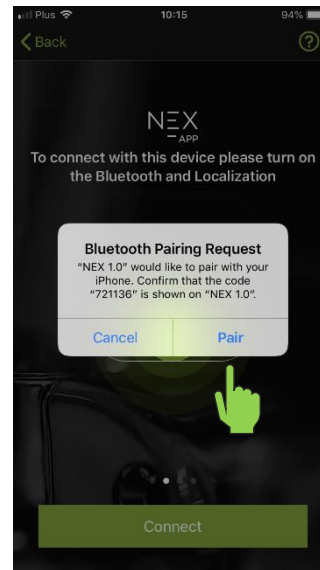
Krok 3. Najděte aplikaci NEX APP nainstalovanou v telefonu a spusťte ji.



Krok 4. Na uvítací obrazovce klepněte na Spustit nastavení a pokračujte ke spárování zařízení s telefonem



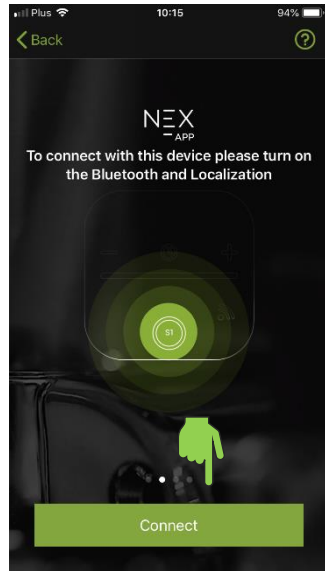
Krok 5. Ve vyskakovacím okně potvrďte spárování s novým zařízením Bluetooth.



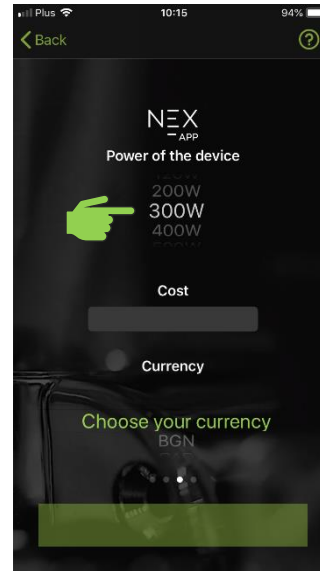
Krok 6. Když svítí tlačítko „minus“ na el. topné tyči stiskněte jej pro potvrzení spárování s aplikací.



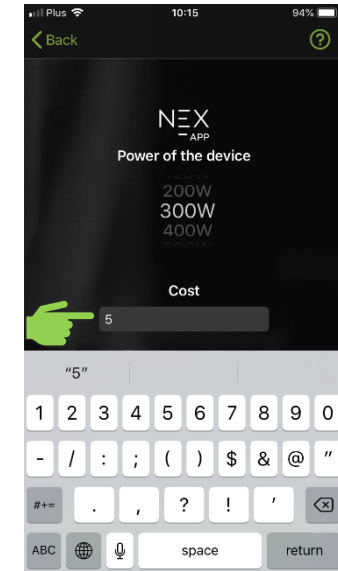
Krok 7. Stiskněte tlačítko Connect pro přechod na konfiguraci a přizpůsobení aplikace vašemu radiátoru.



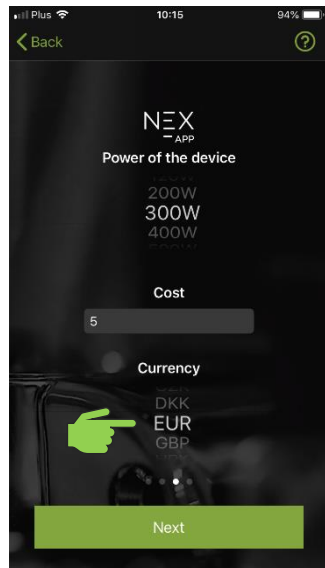
Krok 8. Určete výkon elektrického topného tělesa.



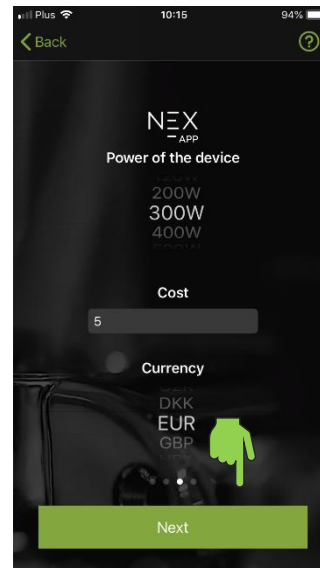
Krok 9. Určete náklady na kWh



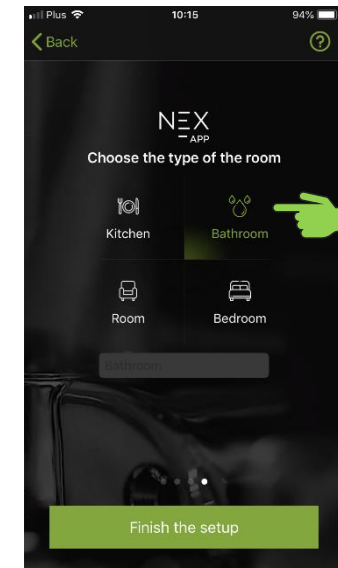
Krok 10. Vyberte měnu, ve které se budou počítat náklady.



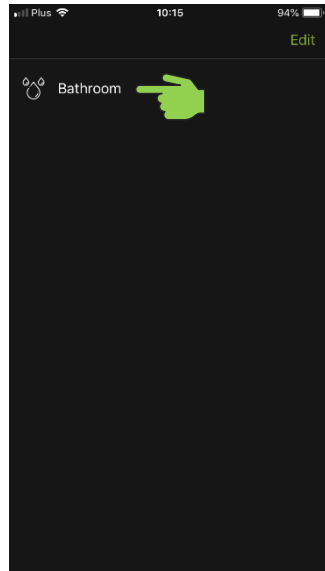
Krok 11. Stisknutím tlačítka Next uložte nastavení.



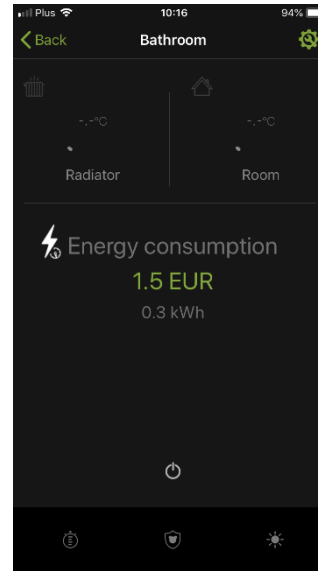
Krok 12. Vyberte typ místnosti, kde je el. topná tyč instalován.



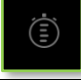
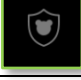



Krok 13. Vyberte zařízení ze seznamu pro vstup do ovládacího menu.



Krok 14. Elektrický topný tyč byla spárována a připraven a k použití.



	Obecné a aktuální statistiky relace aplikace NEX APP fungují
	Tlačítko ON/OFF, které je zodpovědné za zapnutí a vypnutí elektrického topného tělesa.
	Ikona pracovního plánu otevře nastavení programátoru.
	Rodičovská kontrola, aktivace funkce vede k zablokování všech tlačítek na řídicí jednotce
	Funkce "dovolená", při aktivaci automaticky nastaví minimální teploty: 30°C pro radiátor a 17°C pro místnost.

# NEX -APP

First startup and pairing of NEX APP application

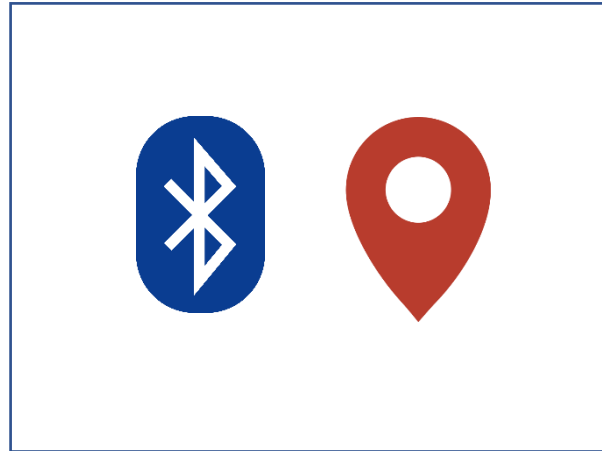


\*This manual is provided on an IOS platform. For Android system there may be slight differences

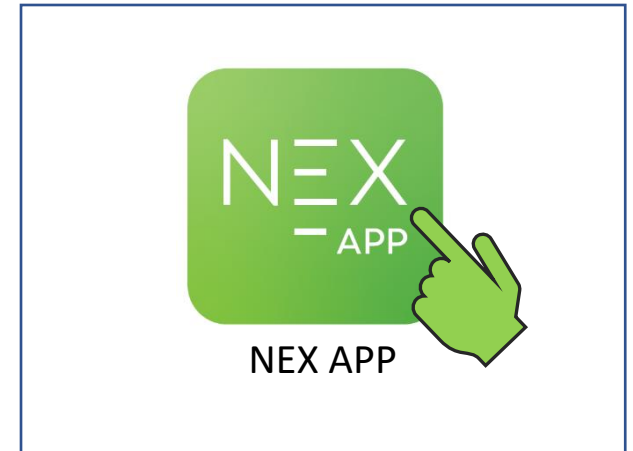
**Step 1. Find and instal the NEX APP application** in the appropriate store on your platform (Google Play or App Store).



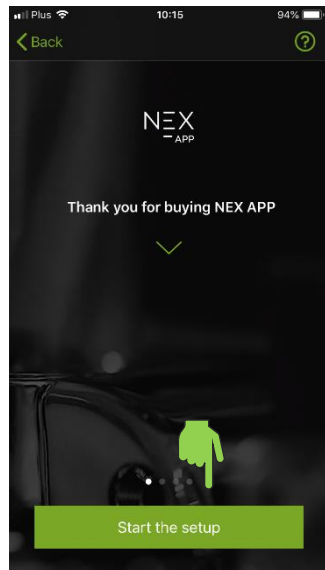
**Step 2. Make sure that the localization and bluetooth functions** are enabled.



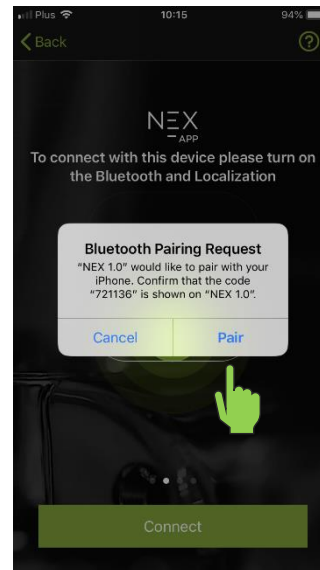
**Step 3. Find the NEX APP application installed on your phone** and **launch it.**



**Step 4. On the welcome screen, tap Start the setup** to proceed to pairing your device with your phone



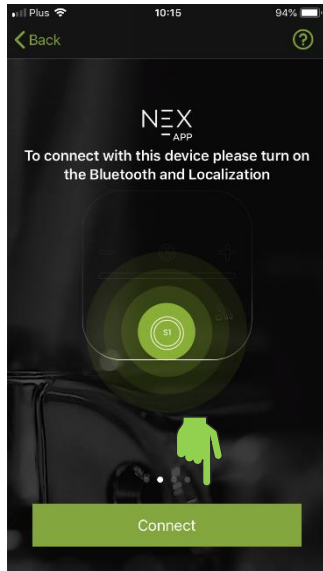
**Step 5. In the pop-up window, confirm the pair** to the new Bluetooth device.



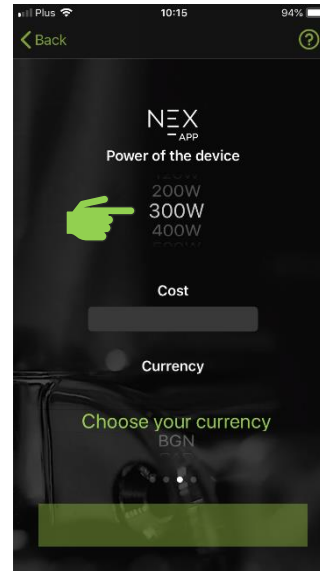
**Step 6. When the "minus" button on the heater is illuminated,** **press it** to confirm pairing with the app.



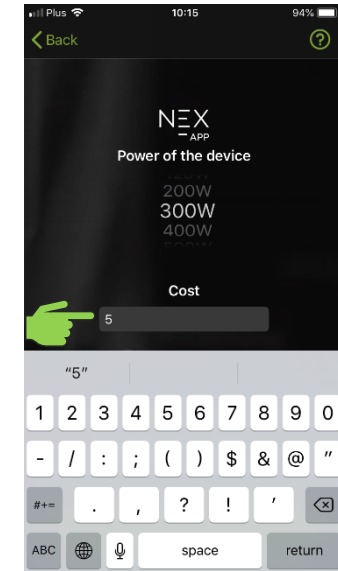
**Step 7.** Press the **Connect** button to move to configuration and adjust the application to your radiator.



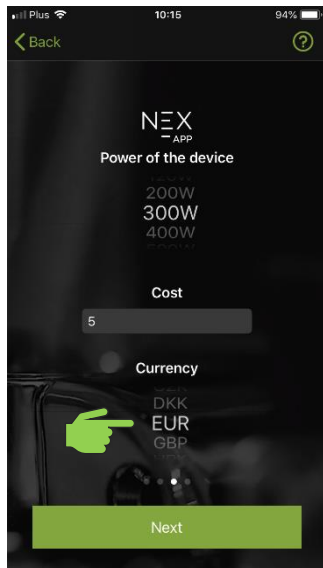
**Step 8.** Determine the **wattage** of the electric heating element.



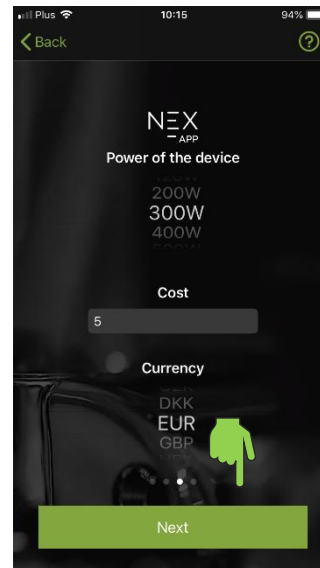
**Step 9.** Determine the **cost** of a kWh (one kilowatt-hour).



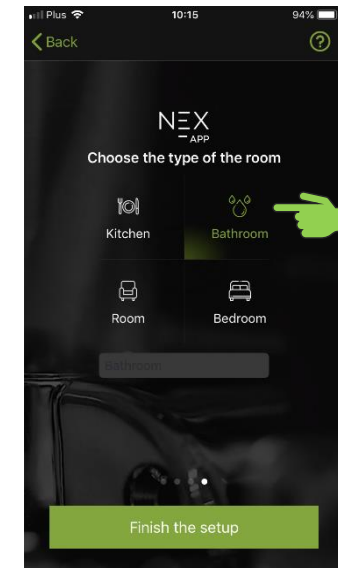
**Step 10.** Select the **currency** in which the cost will be calculated.



**Step 11.** Press **Next** to save the settings.

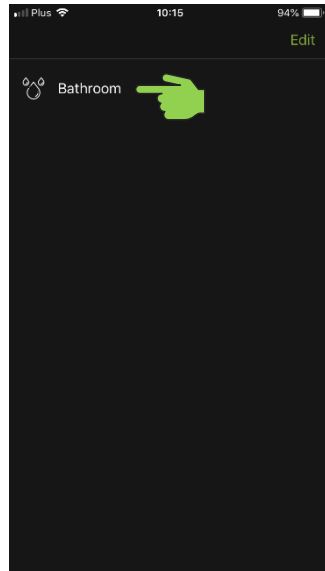


**Step 12.** Select the **type of room** where the heater is installed.





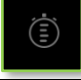
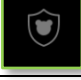



**Step 13.** Select a device from the list to enter the control menu..



**Step 14.** The electric heating element has been paired and prepared for use.



	General and current session statistics of the NEX APP work.
	The ON/OFF button, which is responsible for turning the electric heating element on and off.
	The work schedule icon, opens the programmer setup.
	Parental control, activation of the function leads to the blocking of all buttons on the control unit.
	Function "vacation", when activated automatically sets the minimum temperature setting: 30°C for the towel radiator and 17°C for the room.